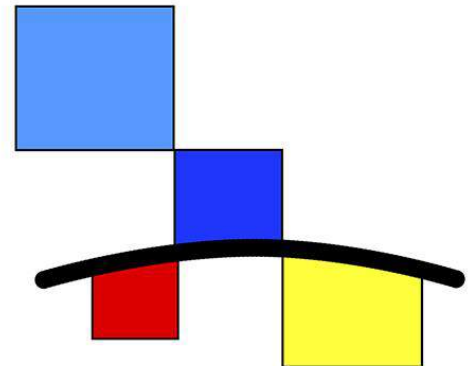


VERSION 3
FEBRUARY 1, 2018



iesha homes

Affordable Architectural Homes

IESHA EXPORT

INFORMATION PACK 2017

PRESENTED BY: JON BENELLE
IESHA BELLINGEN PTY LTD
623 PROMISED LAND ROAD GLENIFFER

IESHA EXPORT

Welcome friends and clients, IESHAHOMES thanks you for enquiring about our new homes. IESHAHOMES are the toughest Affordable Architectural houses on the market with the average home C2 Rated. (Please see the IESHA PACK) document for more details about our products and services.

1. Layout Plans of IESHAHOMES 2017/18 range.
1 Bedroom full roof / Flat Roof:



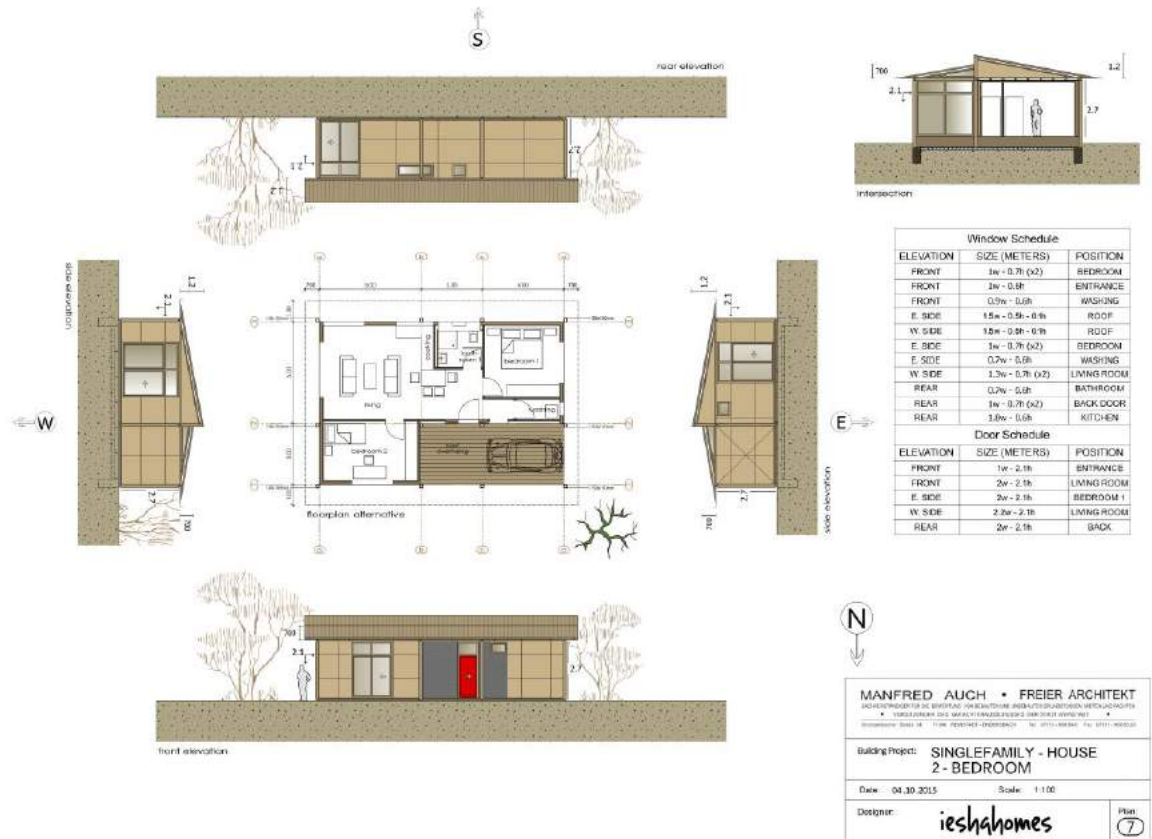
2. Layout Plans of IESHAHOMES 2017/18 range.

1 Bedroom full roof / Curve Roof:

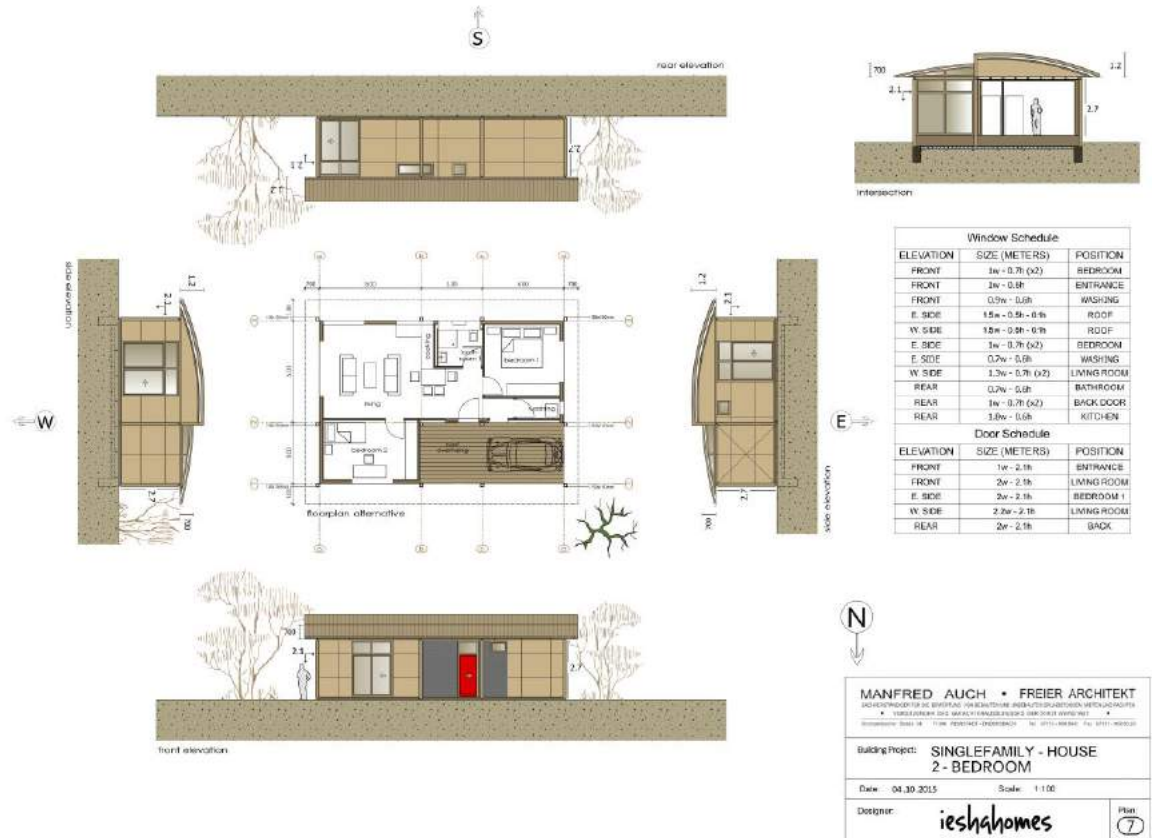


3. Layout Plans of IESHAHOMES 2017/18 range.

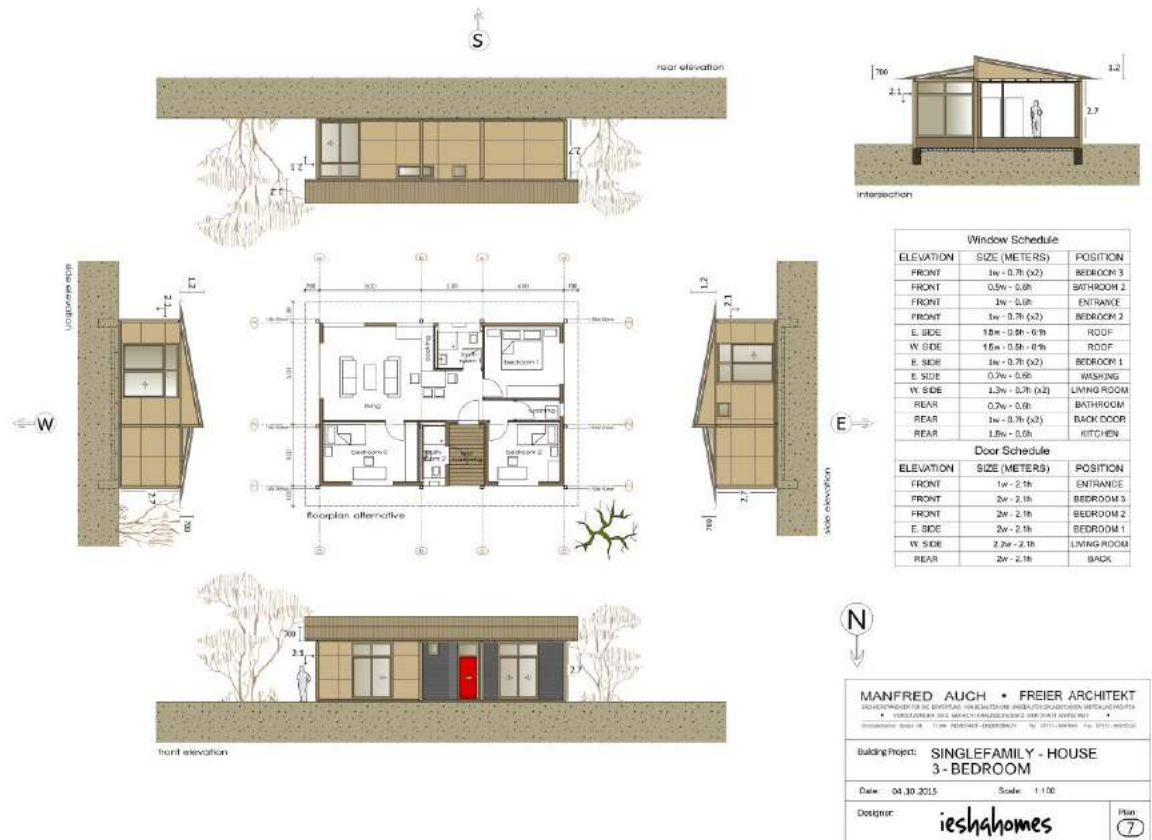
2 Bedroom Flat Roof:



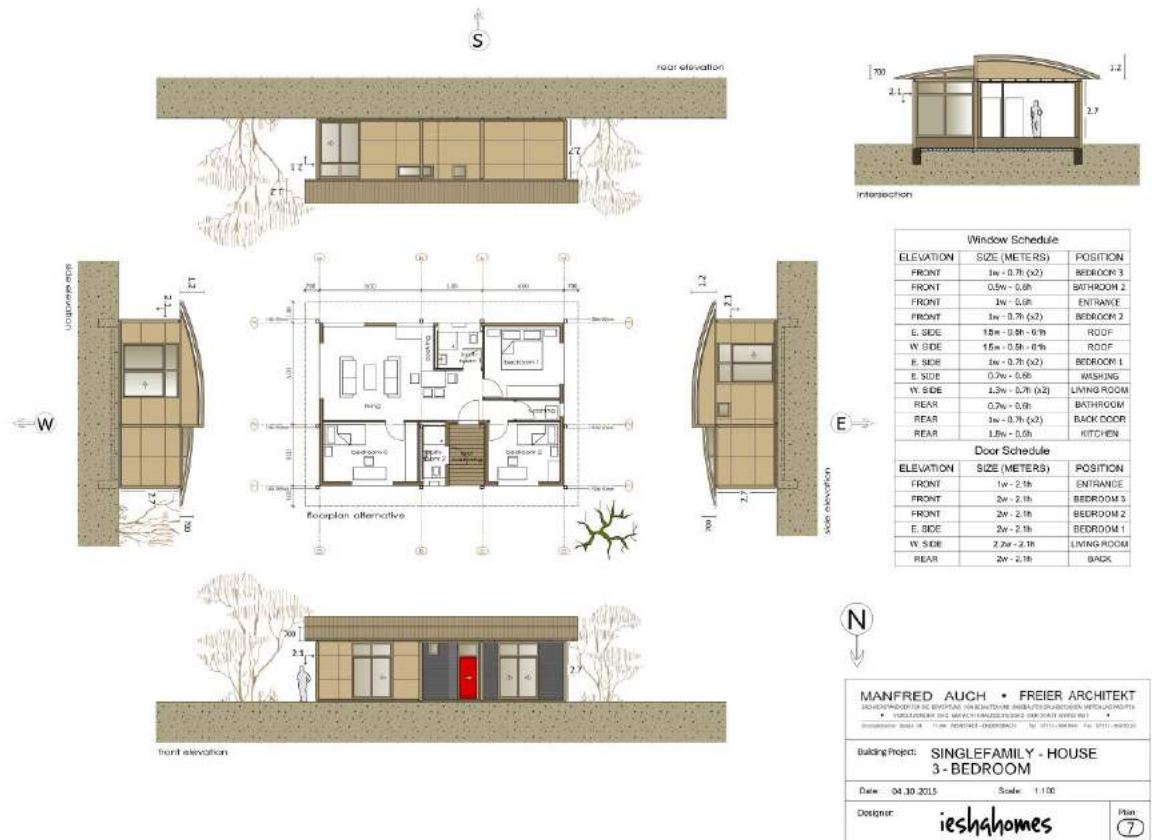
4. Layout Plans of IESHAHOMES 2017/18 range.
2 Bedroom /Curved Roof:



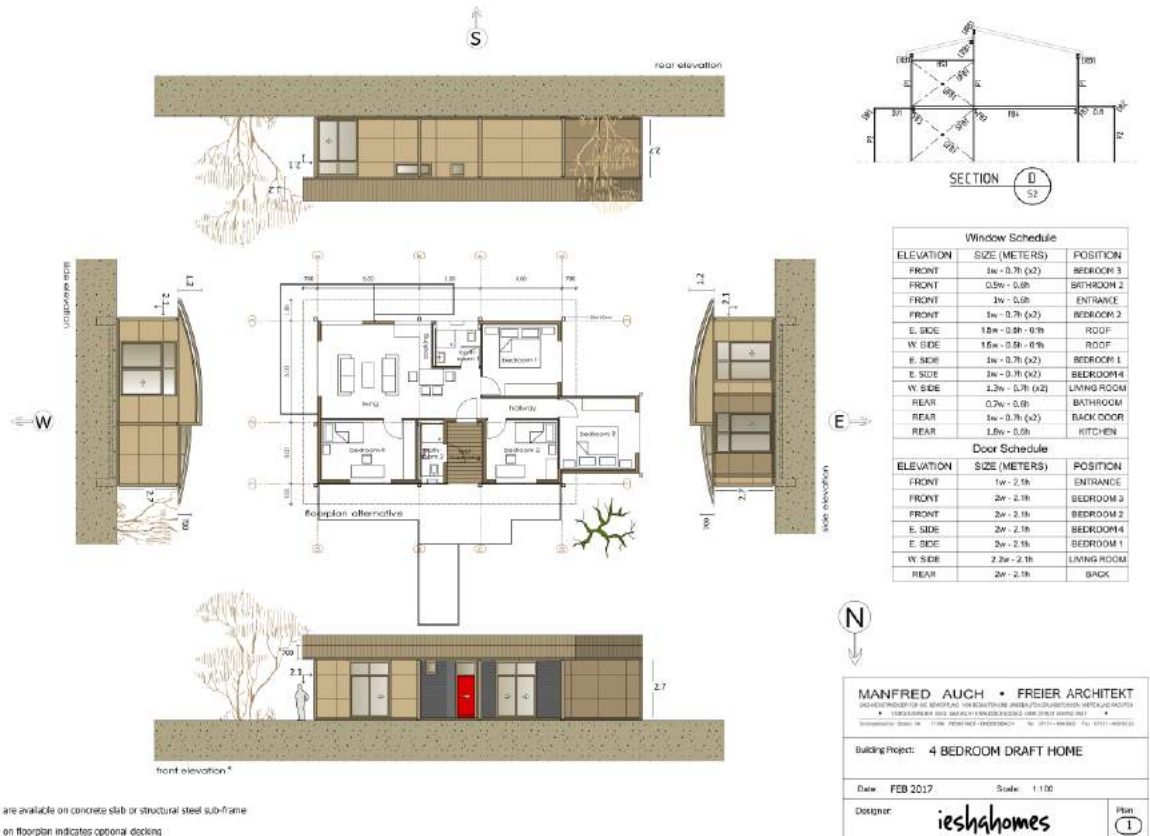
5. Layout Plans of IESHAHOMES 2017/18 range.
3 Bedroom / Flat Roof:



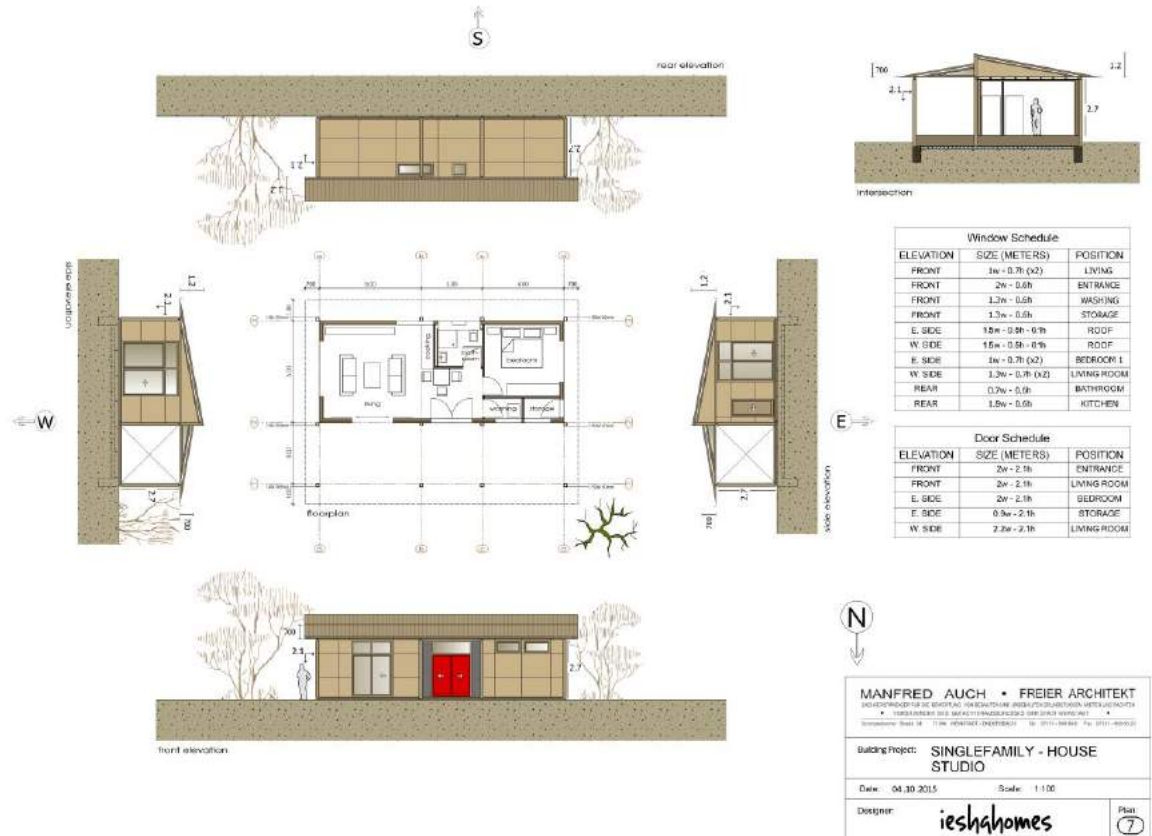
6. Layout Plans of IESHAHOMES 2017/18 range.
3 Bedroom /Curved Roof:



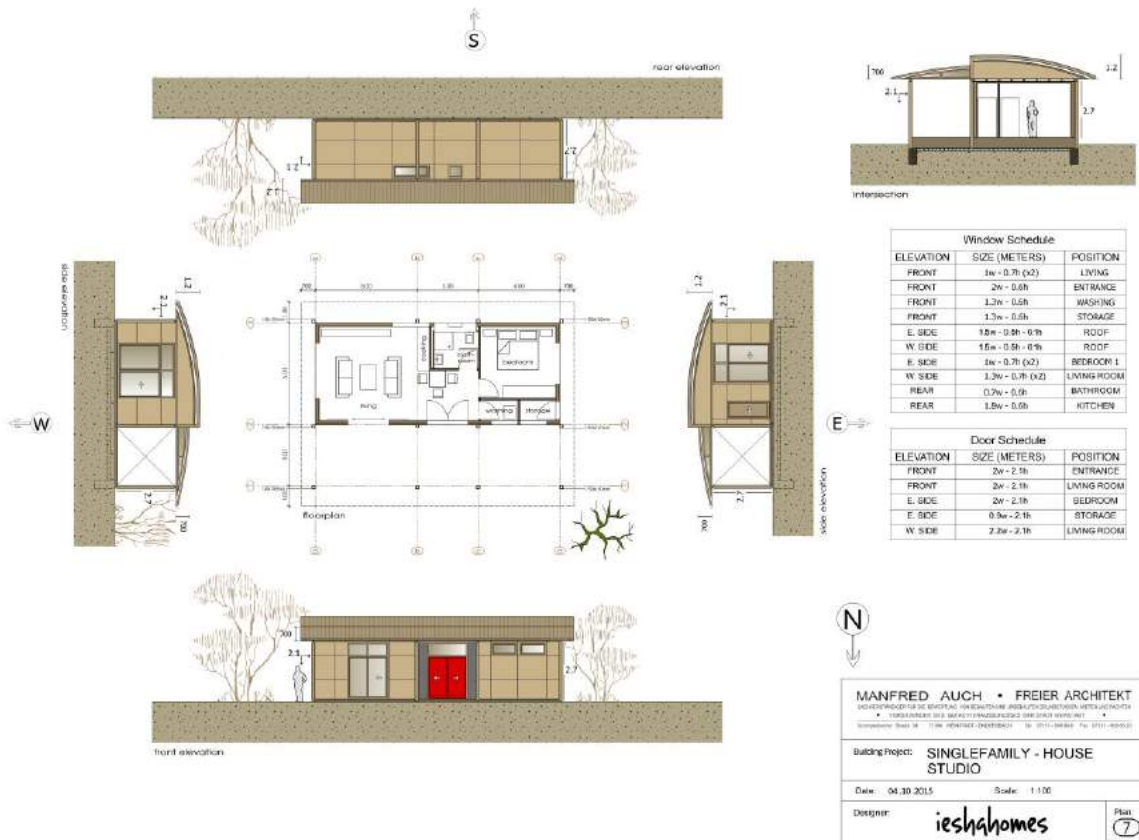
7. Layout Plans of IESHAHOMES 2017/18 range.
4 Bedroom /Flat Roof:



8. Layout Plans of IESHAHOMES 2017/18 range.
 Granny Flat Studio A / Flat Roof:

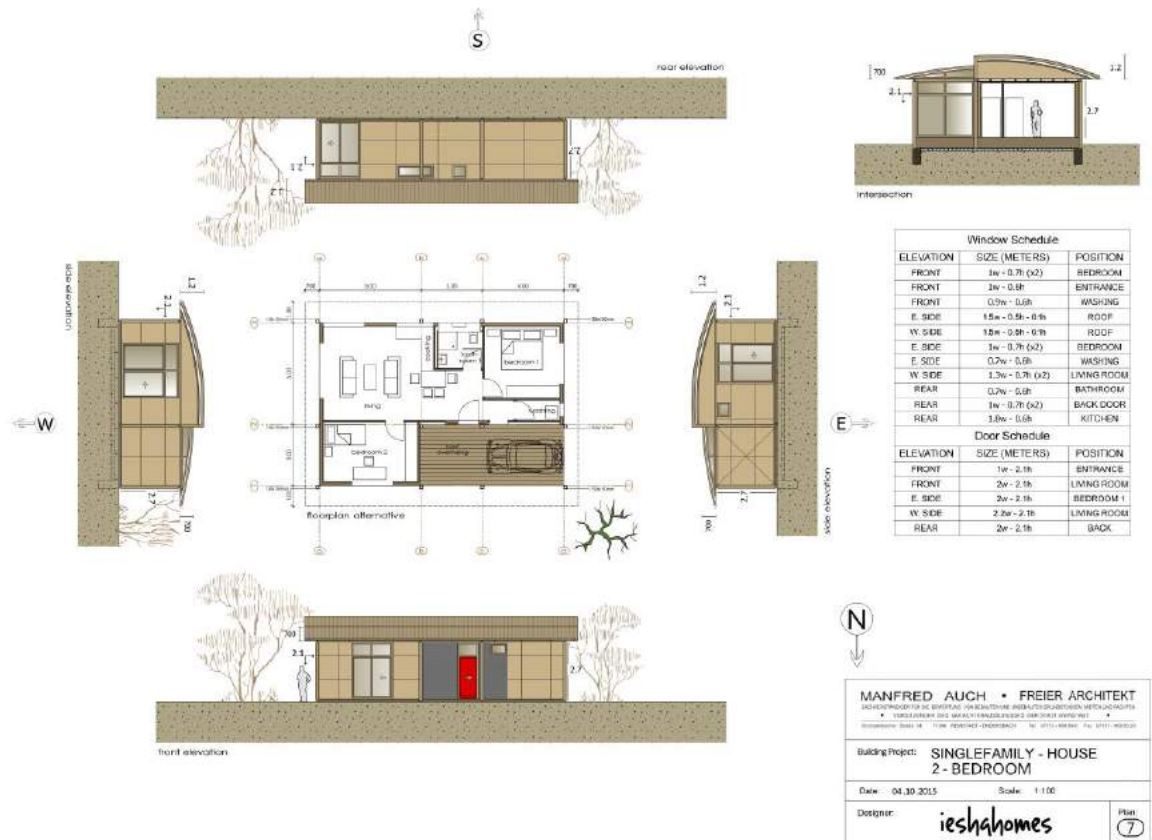


9. Layout Plans of IESHAHOMES 2017/18 range.
 1 bed Studio Granny / Curved Roof:



12. Layout Plans of IESHAHOMES 2017/18 range.

CURRENT NEW DISPLAY HOME BEING BUILT 2018 Range /Flat Roof:



13. Flatpack Export Pricing: Prices: No GST included. FOB.

- **1 Bed FR / Full Roof** AUD \$168k
- **1 Bed CR / Full Roof** AUD \$178k
- **2 Bed FR** AUD \$198k
- **2 Bed CR** AUD \$216k
- **3 Bed FR** AUD \$254k
- **3 Bed CR** AUD \$262k
- **4 Bed FRL** AUD \$298k
- **4 Bed CRL** AUD \$286k
- **4 Bed FR ST** AUD \$267k
- **4 Bed CR ST** AUD \$275k
- **Granny Flat** \$158k
- **Studio A CR** AUD \$148k
- **Studio B FR** AUD \$138k
- **2 Bed + Sunroom + extras (Display 2018)** AUD\$248k

All come with Decks/Steps/Full inclusions (above standard) / Fast Build Time / Easy to build / Build Assist and after sales service and insurance/warranty's, water tank, aircon, open planned or set layout. GST is included.

Price is For Flat Pack for concrete pad OR as a raised subfloor to 600m (min). If you require a higher sub floor, then the prices will change.

All IESHAHOMES have a steel subfloor and skeleton frame (boxed steel)
External design Included or can be optional /Decks/Steps (these are included in our costings).

14. Shipping & delivery

Houses require Flat Pack System

1 house = 2 FCL / Studio = 1 FCL

February 11th 2018 would be the delivery time due to the Christmas holidays in December

Ex Brisbane / Sydney / Christchurch / Auckland options

Letter of Credit

FOB

All pricing done on min quantity = 5 new homes

Pricing is for our 2018 range (Display now being built) see website Australia.

No GST applies

Freight Fwd. co based in Brisbane

15. Warranty

Manufacture Materials 15/25years *conditions Apply*

Our company 2 years' service

Certificates: AUS/NZ standards.

All components Australian or New Zealand sourced and made

Quality Precision Engineered Products

16. Build assist services

IESHAHOMES provide Build Assist services that support the construction of IESHAHOMES. This is available by SKYPE / PH: / WEB / In person on site with you *conditions Apply* These are FEE based (Reasonable) costs. You will receive 15hrs FREE with your order at our cost.

17. Manuals:

You will receive building manuals for all homes purchased (easy to use) English only
A video of the builds will also be provided

18. Quick Key specs - see IESHA PACK for full inclusions and exclusions.

- . Fully Engineered Steel House Skeleton made from high grade galvanized steel which include the sub floor. The sub floor can be a min of 400mm off the ground or set into concrete pad/floor. Maximum off the ground height is 2.6m.
- . High Grade SIPS System for Roof and Walls / Magnesium high finish / Range of thicknesses
- . R6 Rated thermal (if floor is insulated) or standard 4.5 to 6.5 depending on SIPS width.
- . All Aluminum Windows and Doors are High Quality SMART GLASS / Tinted to suit/ Hardened Glass. 2700h
- . All quality fixtures and fittings based on ABOVE average quality
- . Smart Kitchen PC system and Kitchen quality is ABOVE Average
- . Cyclone Rated standard C2 and up to C5
- . Earth Quake Rated N2 and if (if Seismic Steel is used) higher.
- . Flood resistant (if floods occur – only Kitchen is effected) and replaceable
- . Unique Storage Systems included HDS / LED lighting / Gas & electric Appliances
- . Decks and Hardwood decking / standard flooring

19. Invitation to represent IESHAHOMES export and handle sales and shipping to your region.

The director of IESHAHOMES would like to request consideration to the above.

Find attached is the IESHA PACK and Requirements Doc; please view and fill out as required. We can then provide *confirmed fixed prices*.

Thank You,

Jon Benelle

Director of IESHAHOMES